The background is a solid blue color. In the upper right corner, there is a graphic of binary code (0s and 1s) arranged in a perspective that makes it look like it's receding into the distance. In the lower right corner, there is a wireframe cube made of white lines and dots, with a bright light source at one of its vertices, creating a lens flare effect.

Your business
data is one of
your most
important assets.

**But what's the
best place to
keep it?**

You have two main options:



Cloud-based
storage

or



On-premises
storage



Wondering

**which is best for
your business?**



Cloud benefits:

- ✓ **Access your data**
anywhere
- ✓ **Scales** with your business
- ✓ **No hardware** to maintain



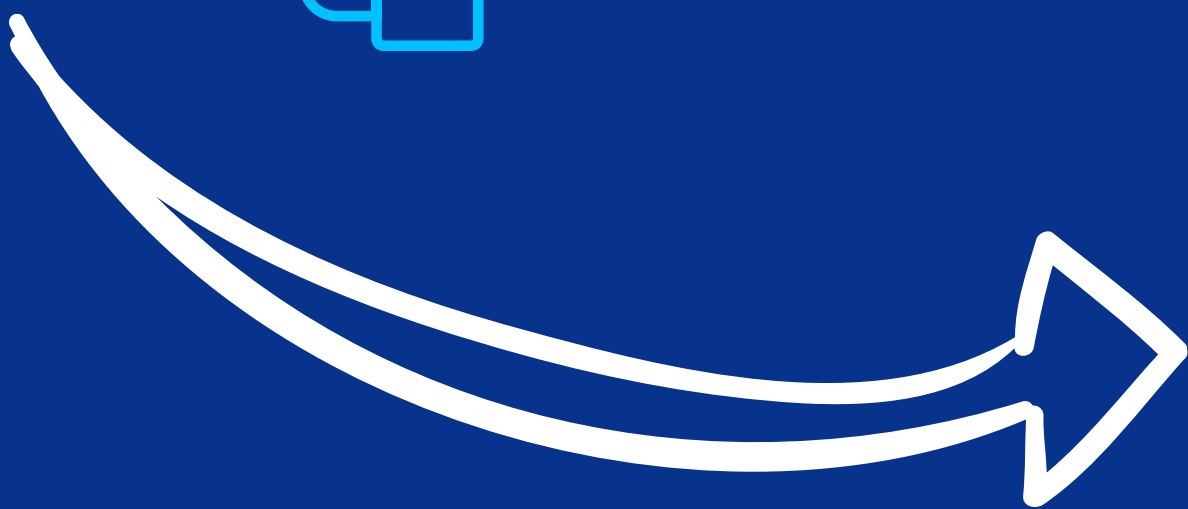
Cloud risks:

- ✗ **Requires** reliable internet
- ✗ **You rely on** the provider's security
- ✗ **Costs rise** as storage needs grow



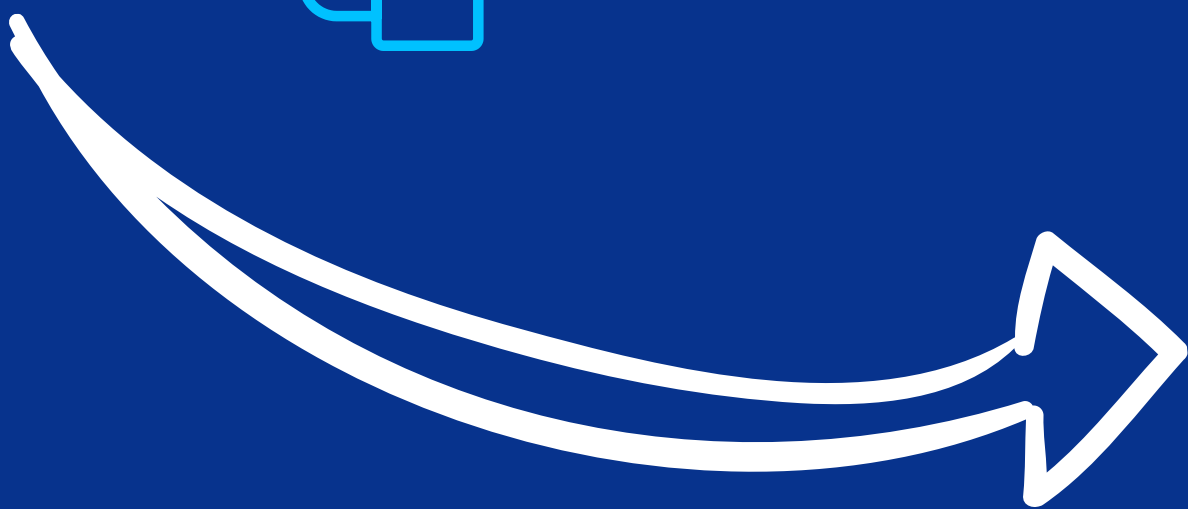
On-premises benefits:

- ✓ **Full control** of your data
- ✓ **Less reliance** on internet connection
- ✓ **One-time** setup cost



On-premises risks:

- ✗ **Higher** upfront costs
- ✗ **You handle** all maintenance
- ✗ **Harder to** access data remotely



Consider

cloud storage if you:

- Work remotely
- Need flexibility to grow
- Want less maintenance



Choose

on-premises storage if you:

- Want total control
- Have unreliable internet
- Are ready to invest



Still unsure?

**A hybrid solution
combines both.**



Hybrid storage

gives you:

- ✓ **Cloud flexibility**
- ✓ **On-premises control**
- ✓ **Extra backup options**



The right choice
depends on your
business needs.

**We can help
you decide.
Get in touch.**